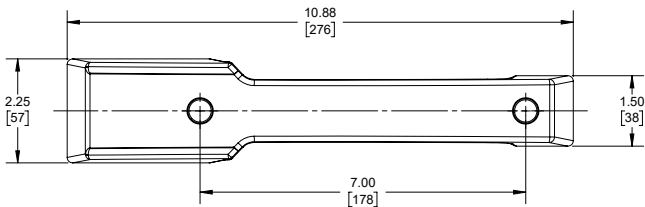


Component Hardware® 10-7/8" L Satin Chrome
 Surface Mount Door Pull Handle

W29-1000



Dimensions shown in inches (mm) are for reference only and are subject to change.

Approximate shipping weight - 2lbs

10-7/8" L Satin Chrome Surface Mount Door Pull Handle

Commercial Quality Features

- Ideal for all magnetic framed doors
- Ergonomic design offers comfortable and easy door opening
- Non-handed-reversible feature for right or left hand swinging doors
- Heavy-duty high pressure zinc die-casting
- Satin chrome finish will not show fingerprints
- Non-locking
- Concealed tamper-resistant mounting
- May be used with optional padlock hasp with inside safety release.
 Order separately as Model No. W29-5000-4X