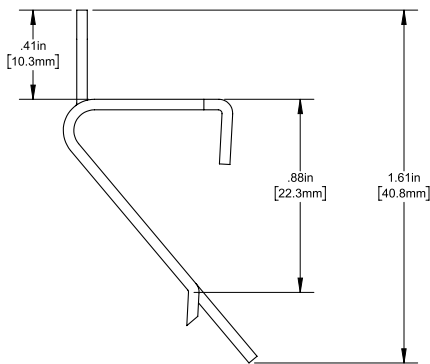
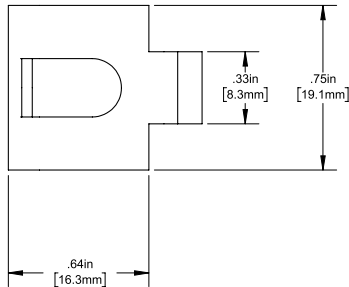


Component Hardware® 3/4" W Zinc Plated Steel Snap-In Shelf Support Clip With 1/2" H Tab For Heavy Duty Square Pilaster

T30-5050



Dimensions shown in inches (mm) are for reference only and are subject to change.

Shipping weight - 0.4 lbs

3/4" W Zinc Plated Steel Snap-In Shelf Support Clip With 1/2" H Tab For Heavy Duty Square Pilaster

Specifically designed for refrigerated door applications

- Zinc plated steel construction
- Clip snaps securely into heavy duty square style pilaster
- Used to support solid or wire shelving in cabinets, reach-in refrigerators and freezers
- 1/2" H tab insures shelf remains secure on clip