



PROJECT NAME: _____

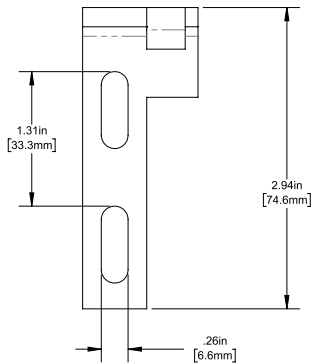
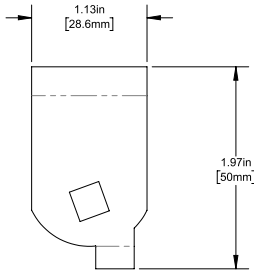
LOCATION: _____

SPECIFIER ITEM NO. _____ QTY: _____

COMPONENT HARDWARE PART NO. _____

Component Hardware® Chrome Plated Steel Left Hand Vertical Cartridge Bracket With Vertical Mounting Holes

R56-6011



Dimensions shown in inches (mm) are for reference only
and are subject to change.

Chrome Plated Steel Left Hand Vertical Cartridge Bracket With Vertical Mounting Holes

Specifically designed for refrigerated door applications

- Durable chrome plated steel construction
- Provides a clean, concealed appearance on cabinets and reach-in refrigerators and freezers
- Designed for use with R56 Series cartridge hinges
- 1-15/16" pivot distance
- Vertical bracket with vertical oblong mounting holes
- For left hand door applications

Shipping weight - 0.4 lbs