

Component Hardware® Chrome Plated Steel
 Horizontal Cartridge Bracket

R56-501x

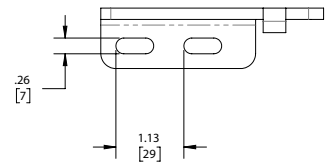
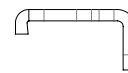
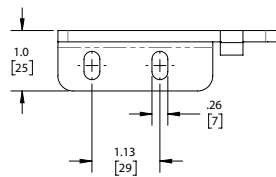
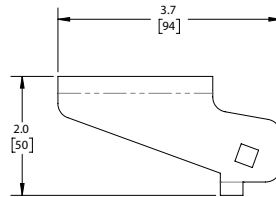
- R56-5010 Right Hand, Vertical Mounting Slots
- R56-5011 Left Hand, Vertical Mounting Slots
- R56-5016 Right Hand, Horizontal Mounting Slot
- R56-5017 Left Hand, Horizontal Mounting Slot



Chrome Plated Steel Horizontal Cartridge Bracket

Specifically designed for refrigerated door applications

- Durable chrome plated steel construction
- Provides a clean, concealed appearance on cabinets and reach-in refrigerators and freezers
- Designed for use with R56 Series cartridge hinges
- 1-15/16" pivot distance
- Horizontal bracket with vertical or horizontal oblong mounting holes
- For right hand or left hand door applications



Dimensions shown in inches (mm) are for reference only and are subject to change.

Shipping weight - 0.4 lbs