

Component Hardware® 1-5/8" Offset 5-3/4" L  
 Chrome Plated Die Cast Non-Lift-Off  
 Self-Closing Edgemount Hinge With Power  
 Spring Assist

# R50-2851



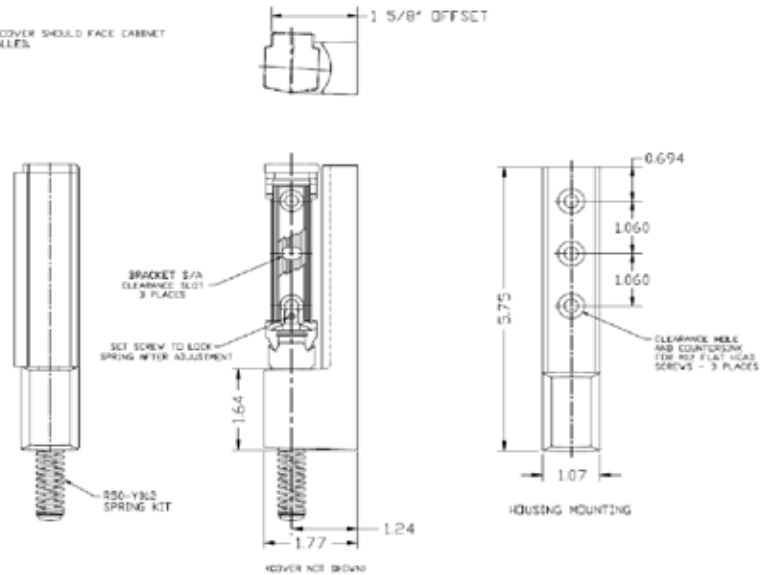
1-5/8" Offset 5-3/4" L Chrome Plated Die Cast Non-Lift-Off Self-Closing Edgemount Hinge With Power Spring Assist

**Specifically designed for refrigerated door applications**

- Ideal for reach-in refrigerators and doors equipped with magnetic gasketing
- High pressure die cast zamak construction
- Polished chrome plated finish
- 1-5/8" offset
- 5-3/4" L x 1-3/16" W x 1-3/4" H overall
- Non-liftoff design prevents accidental door removal when door is left in the open position - retaining screw is easily disengaged for door removal
- Furnished with power spring assist for additional closing force on heavier doors
- Self-closing cam-rise action
- Adjustable...to compensate for gasket wear
- Overclose feature...provides constant door pressure and full gasket seal
- Hold open position, cam allows door to remain open at 120°
- Non-handed...for right and left hand operation
- Contemporary styling
- Mounting holes drilled and countersunk for #10 or M5 flat head screws

**NOTE:**

1. BRACKET ON COVER SHOULD FACE CABINET WHEN INSTALLED.



*Dimensions shown in inches (mm) are for reference only and are subject to change.*

Approximate shipping weight - 0.5 lb