

PROJECT NAME: _____

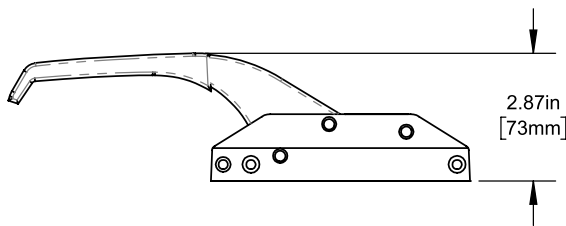
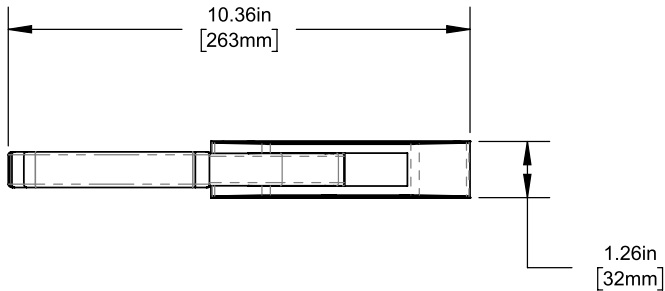
LOCATION: _____

SPECIFIER ITEM NO. _____ QTY: _____

COMPONENT HARDWARE PART NO. _____

Component Hardware® 10-1/4" L Chrome Plated Die Cast Mechanical Edgemount Oven Latch With Insulated Offset Handle

R35-3105-X



Dimensions shown in inches (mm) are for reference only and are subject to change.

10-1/4" L Chrome Plated Die Cast Mechanical Edgemount Oven Latch With Insulated Offset Handle

Specifically designed for refrigerated door applications

- Specifically designed for heated cooking equipment
- Heavy-duty die cast zinc construction
- Polished chrome plated finish
- Furnished with heat-resistant bronze strike roller
- Insulated offset handle without cylinder lock
- 10-1/4" L x 1-1/4" W x 2-7/8" H overall
- Serrated striker plate permits quick adjustment to compensate for door sag
- Unique keeper prevents door from being overridden
- Reversible for right or left hand use
- Mounting holes are drilled and countersunk for #10 flat head screws
- Mounting hole locations are interchangeable with competitors' latches

Shipping weight - 1.5 lbs