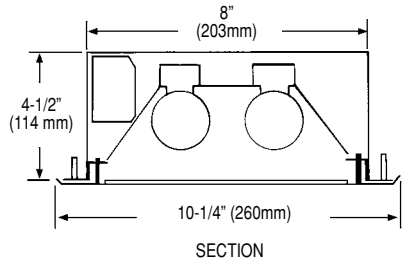
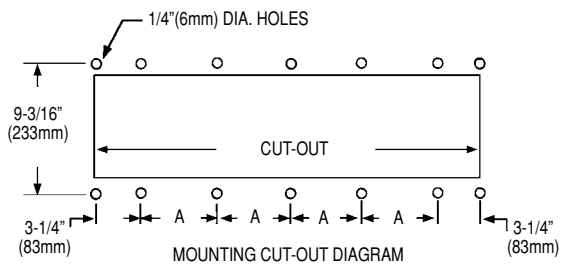
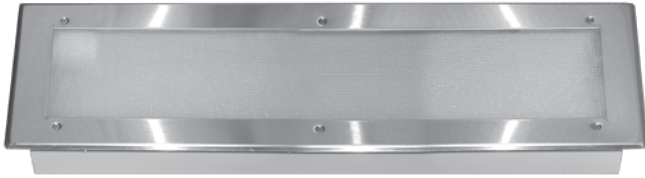


Component Hardware® Recessed Fluorescent Light Fixtures for Commercial Cooking Hoods

L82-10x0 Series

L82-1020 24" Nominal Length
 L82-1030 36" Nominal Length
 L82-1040 48" Nominal Length



Dimensions shown in inches (mm) are for reference only and are subject to change.

Ballast: Universal 120 - 277V, 50 or 60 Hz, T8
 Lamps: T8 fluorescent lamps (not furnished)

Approximate shipping weight - 10 lbs

Low profile, high output, recessed fluorescent lights

Specifically designed for commercial cooking hoods

- Meets all requirements of NFPA 96 and NEC 410
- Recess mount installation
- Low profile - only 4-1/2" (114mm) high for limited overhead clearance applications
- Steel body with baked white enamel finish
- One piece satin finish stainless steel frame to match hood interior
- Tempered, prismatic glass diffuser
- Baked white enamel finish reflector provides a minimum of 87% diffused reflection
- #10-32 x 3/4" (19mm) long threaded studs for mounting
- T8 Octron electronic ballast

Model	Lamps Req'd	Overall Trim Size	Cut Out Size	Holes Req'd	Dim.
L82-1020	(2) F17T8	10-1/4" x 26-1/4" (260mm x 667mm)	8-1/2" x 24-1/2" (216mm x 622mm)	12 total	6" (152mm)
L82-1030	(2) F25T8	10-1/4" x 38-1/4" (260mm x 972mm)	8-1/2" x 36-1/2" (216mm x 927mm)	14 total	7-1/2" (191mm)
L82-1040	(2) F32T8	10-1/4" x 50-1/4" (260mm x 1276mm)	8-1/2" x 48-1/2" (216mm x 1232mm)	14 total	10-1/2" (267mm)

