

**PROJECT NAME:** \_\_\_\_\_

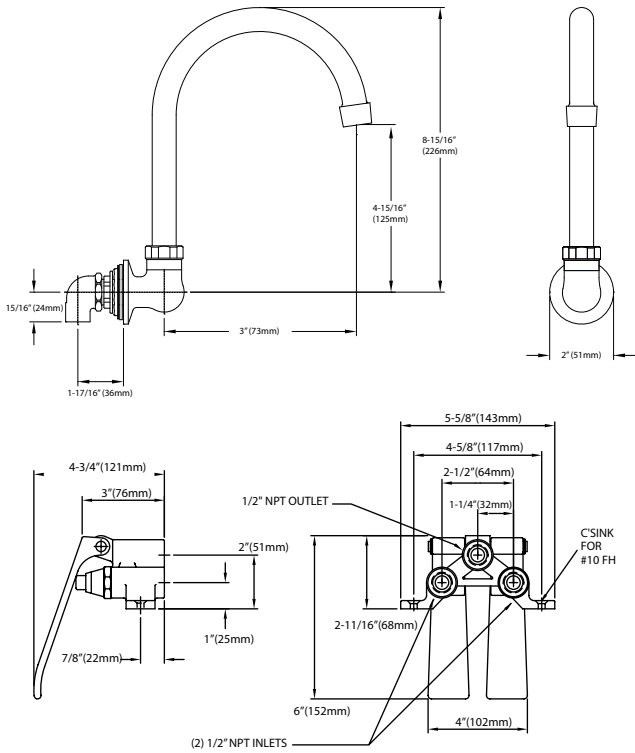
**LOCATION:** \_\_\_\_\_

**SPECIFIER ITEM NO.** \_\_\_\_\_ **QTY:** \_\_\_\_\_

**ENCORE PART NO.** \_\_\_\_\_

Encore<sup>®</sup> Wall Mount Base with 3" Swivel  
 Gooseneck Spout and Knee Dual Lever  
 Operated Valve

**KL25-3000-KIT**



Dimensions shown in inches (mm) are for reference only  
 and are subject to change.

**Spout Base:**

1/2" NPSM Male Inlet  
 Operating Temperature: 40 - 180°F  
 Operating Pressure: 20 - 125psi

**Pedal Valve:**

(2) 1/2" NPT Female Inlets  
 (1) 1/2" NPT Female Outlet  
 Operating Temperature: 40 - 180°F  
 Operating Pressure: 20 - 125psi  
 #10 mounting holes

Approximate shipping weight - 5 lbs  
 Warranty - 2 years parts

Solid heavy duty cast brass is specification and commercial quality

**Commercial Quality Features**

- Polished chrome plated cast brass faucet body
- Leak proof double O-ring spout design
- Polished chrome dual lever knee control

**SPECIFICATIONS:**

Faucet body to be polished chrome plated cast brass. Spout to be 3" swivel gooseneck style with leak proof double O-ring seal design. 2.2gpm aerator. Dual knee lever control to be rough chrome body with polished chrome knee pedals. Knee pedals to have self-closing valves and be color-coded to indicate hot & cold.