

PROJECT NAME: _____

LOCATION: _____

SPECIFIER ITEM NO. _____ **QTY:** _____

ENCORE PART NO. _____

Encore[®] Wall Mount Service Sink Faucet
KC77-2136-VY2



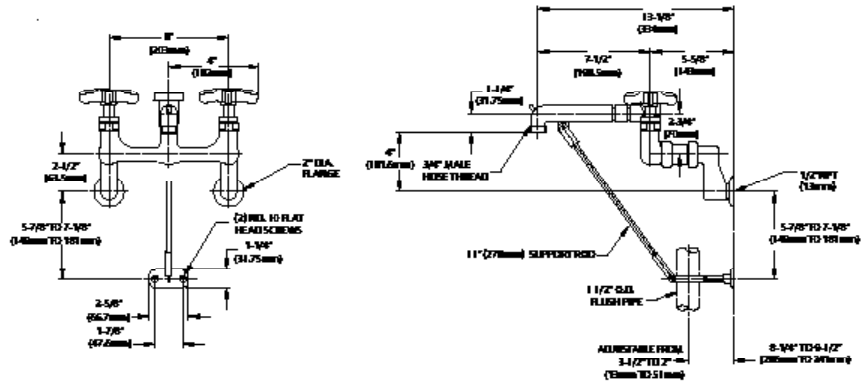
Solid heavy duty cast body is specification and commercial quality

Commercial Quality Features

- Polished chrome plated cast brass body
- ADA-compliant cross handles
- Built-in check valves to prevent cross-flow and back-flow

SPECIFICATIONS:

Wall Mount Service Sink Faucet to be Encore KC77-2136-VY2. Faucet body to be constructed of polished chrome plated brass with ADA compliant cross handles. Atmospheric vacuum breaker heavy duty 7" cast spout with pail hook and standard 3/4" garden hose threaded outlet. Valves to be 1/4-turn full volume compression type with integral check valves to prevent cross-flow and back-flow. Supply inlets to be 8" (203mm) on center, offset 2-1/2", adjustable from 3-3/8" to 8-3/8". 15" wall brace standard.



Dimensions shown in inches (mm) are for reference only and are subject to change.

1/2" NPSM Female Inlets
 Inlets adjustable from 4" (102mm) to 8" (203mm)
 Operating Temperature: 40 - 180°F (5 - 83°C)
 Operating Pressure: 15 - 125psi
 Note: 1-1/8" (29mm) holes for backsplash are recommended to accommodate 1/2" supply nipples

Approximate shipping weight - 5 lbs
 Warranty - 2 years parts

